
TUTORIAL FOR THE EXAMPLE: COLLISION OF VRCROSS UNIT IN 3D

JIANSHENG XIANG

The problem addressed in this example is of direct relevance to the design and application of concrete armour units. The stresses generated when a unit is dropped onto a massive anvil using the contact detection and contact interaction features of FEMDEM provide an informative test case for the numerical methods. The geometry tested is flat-on-flat, a worst case scenario, but it would be possible to set up alternative impact configurations. Figures 1 and 2 illustrate one hypothetical unit which only exist in a virtual sense for the purpose of providing a non-commercial test case. It is termed the VRcross unit and we suggest comparing it with the Vcross unit treated in another example (\VGW_QMULIC\DEV\Y3D\Examples\Vcross. The engineering significance is discussed in publications.

To run this example double click on RunY3D.bat located in the folders: “\VGW_QMULIC\DEV\Y3D\Examples\VRcross”.

After running the above example, Y3D will produce a series of output files with extension .ym. Double click on ConvertResultsToVTU.bat, these ym files are converted into VTK format files with extension .vtu. These vtu files can be postprocessed using the Mayavi program. Mayavi is Open Source and it has been included in the VGW package. To see more information, please visit Mayavi official website, <http://mayavi.sourceforge.net/>. The easiest way to start Mayavi is to double click on ViewResultsUsingMayavi.bat files.

Postprocessing in Mayavi:

The results are postprocessed using the Mayavi program. To visualize results, several simple operations are described as follows

Visualizing animations To visualize animation, just left click “configure data” in top of left panel, a window, “Configure VtkXMLDataReader module” appears. Then click “auto sweep” box, you can watch you results frame by frame.

Zooming in and out To zoom in and out of the scene, first you place the mouse pointer inside the right visualization window. To zoom into the scene, you can keep the right mouse button pressed and drag the mouse upwards. To zoom out of the scene, you can keep the right mouse button pressed and drag the mouse downwards.

Jiansheng Xiang

Copyright (C) 2008, Queen Mary University of London (QMUL) &
Imperial College of Science, Technology and Medicine (ICSTM).

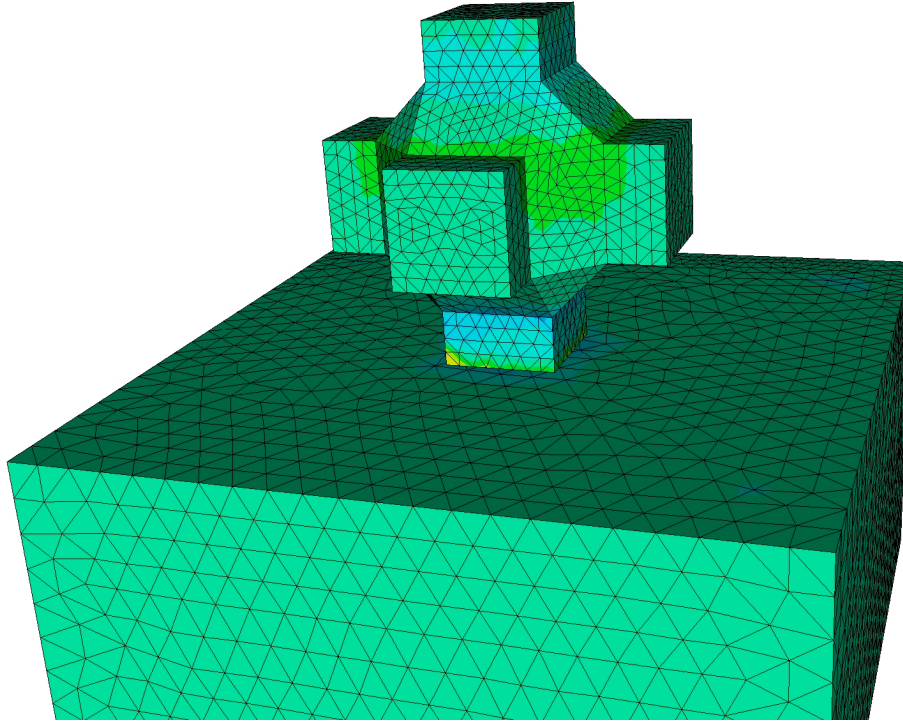


Figure 1 Geometry and mesh used to model impact by drop of concrete unit on massive anvil

Jiansheng Xiang

Copyright (C) 2008, Queen Mary University of London (QMUL) & Imperial College of Science, Technology and Medicine (ICSTM).

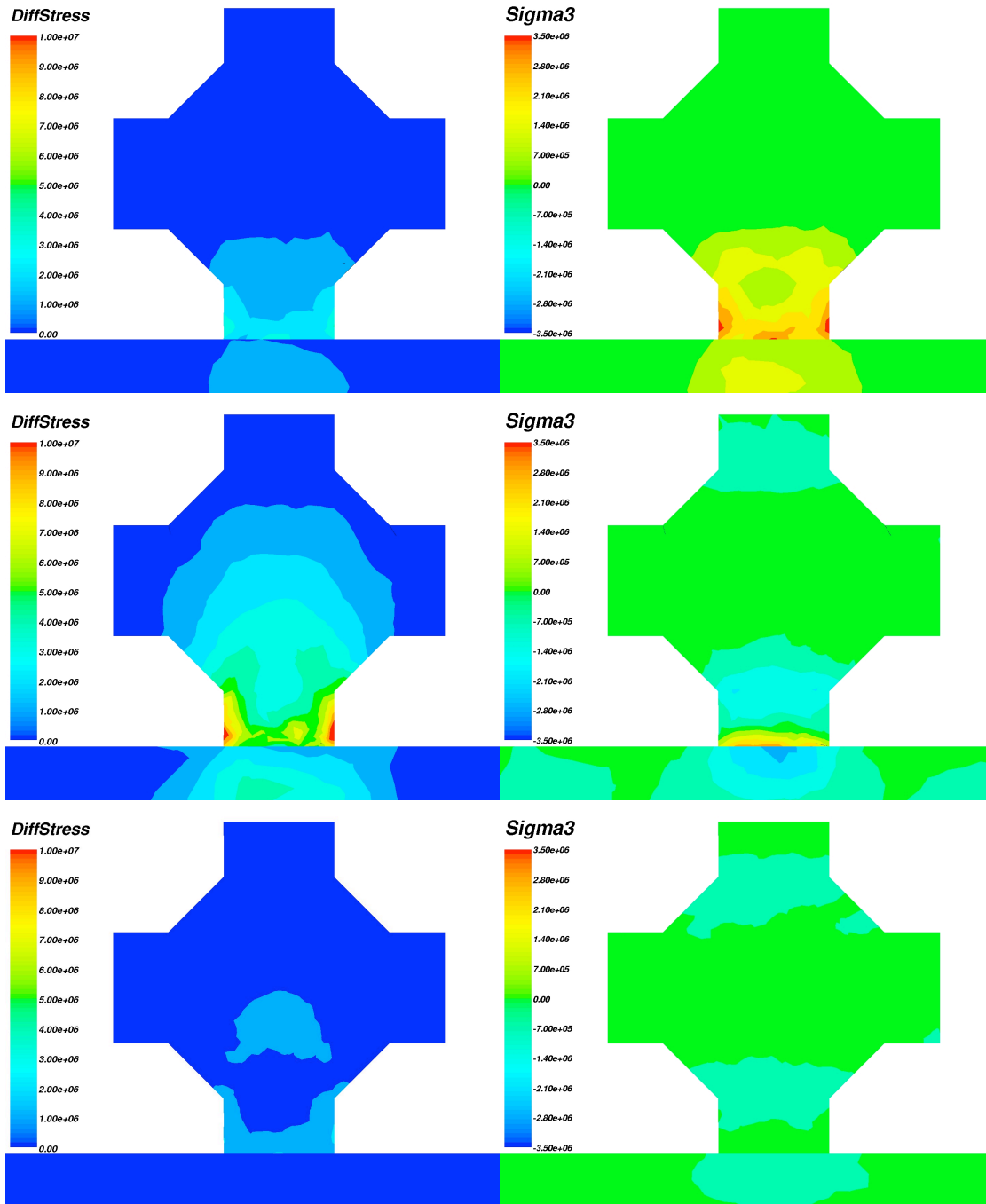


Figure 2. VRcross unit of 18 m^3 volume and height of 3.78 m. See Fig. 9 caption for key to stress contours. Maximum differential stress (MPa), maximum tensile stress (MPa), time after impact (milliseconds) are: (a) 0.88, 1.47, 2.4; (b) 12.0, 3.49, 4.8; (c) 2.0, 0.65, 6.8.